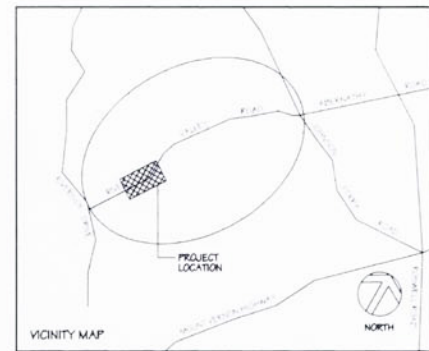
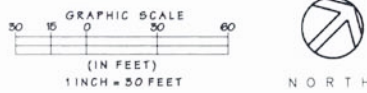
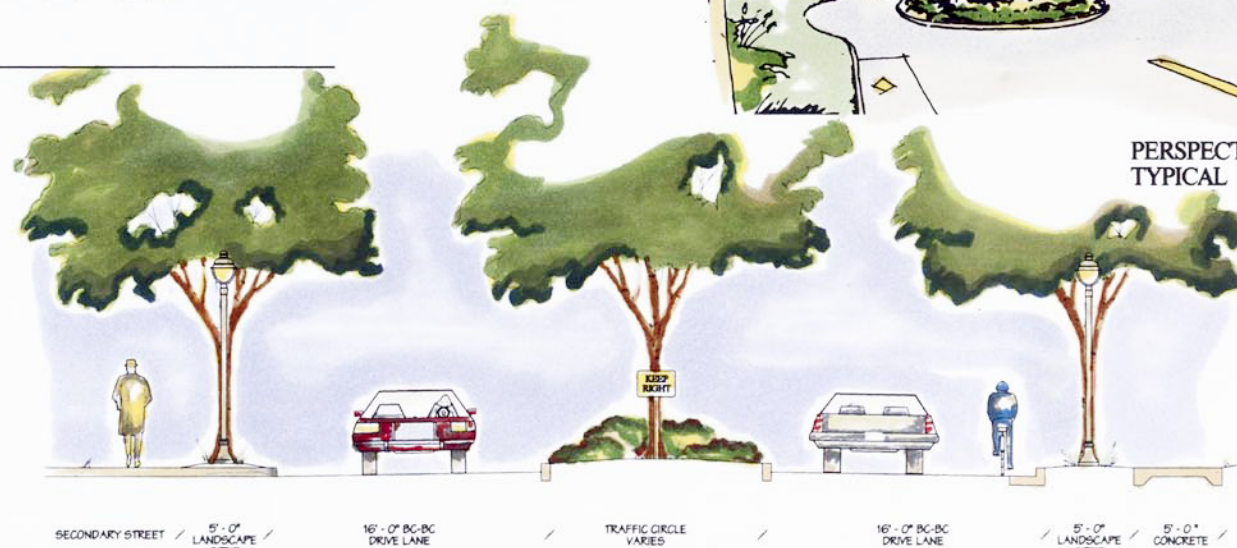


PLAN - RIVER VALLEY ROAD



PERSPECTIVE - TYPICAL TRAFFIC CIRCLE DESIGN

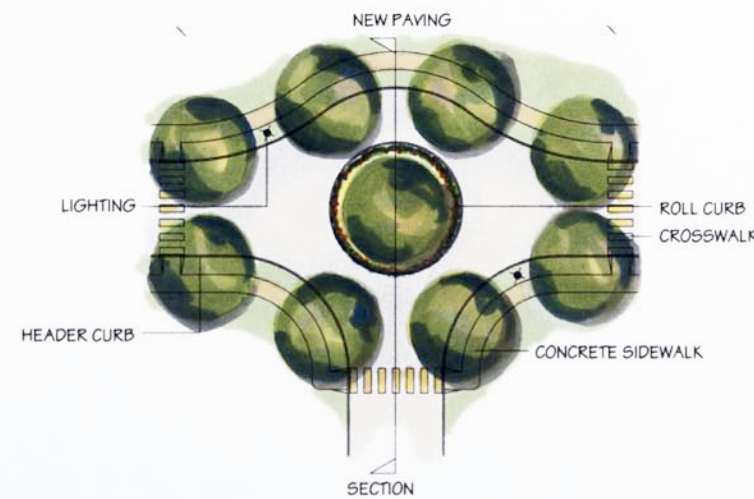


SECTION - TYPICAL TRAFFIC CIRCLE DESIGN

SCALE: 1/4" = 1' - 0"

TRAFFIC ISLANDS

SPLITTER ISLANDS AND TRAFFIC CIRCLES ARE AN AESTHETICALLY PLEASING AND EFFECTIVE TRAFFIC CALMING OPTION. HORIZONTAL DEFLECTION IS CREATED BY THE DEVICES AND VERTICAL DEFLECTION BY THE PLANTINGS. THIS FORCES THE MOTORISTS OFF OF THEIR COURSE, REQUIRING THEM TO REDUCE VEHICULAR SPEED. EXPERIENCE SHOWS THAT DEVICES SPACED AT 600 - 800 FOOT INTERVALS EFFECTIVELY SLOWS TRAFFIC ALONG A STRAIGHT PATH. SPLITTERS ARE TYPICALLY USED IN MID-BLOCK LOCATIONS, AND TRAFFIC CIRCLES ARE USED AT INTERSECTIONS. ALTERNATING THE DEVICES CREATES VISUAL INTEREST AND PROMOTES DRIVER ALERTNESS.



PLAN - TYPICAL TRAFFIC CIRCLE DESIGN

SCALE: 1" = 10' - 0"

MASTER PLAN:
RIVER VALLEY ROAD NEIGHBORHOOD PLAN - TYPICAL TRAFFIC CIRCLE USE